

Cornucopia Tea Towels

100% GOTT'S Certified Organic Cotton

make it your own



l o u e t

north america

100% Organic 2/8 Cotton
Tea Towels

Pattern Design by Jane Stafford Textiles

Cornucopia Tea Towels

Pattern by Jane Stafford using LNA - 100% Organic Cotton

Hand Weaving Pattern Instructions

Yarn Requirements

Louet 100% Organic Cotton

3 x 100g cones Brown
1 x 100g cone Fern
1 x 100g cone Blue
1 x 100g cone Yellow

Please read over all instructions before beginning to weave.

Warp Length: 4.5 yds, includes take up, shrinkage and loom loss.

Loom Requirements

36" 4 Shaft Loom

EPI: 18 PPI: 18

Reed: #12 1/2 warp thread per dent.

Width in Reed: 23"

Total Warp Ends: 410.

Finished Size: 27" x 19".

Make a 4.5 yard warp in the following colour sequence:

160 ends Brown
10 ends Bright Pink
10 ends Brown
10 ends Bright Pink
10 ends Brown
10 ends Bright Pink
10 ends Brown
10 ends Orange
10 ends Brown
10 ends Orange
10 ends Brown
10 ends Orange
10 ends Brown
10 ends Red
10 ends Brown
10 ends Red
10 ends Brown
10 ends Red
80 ends Brown

WEAVING SEQUENCE:

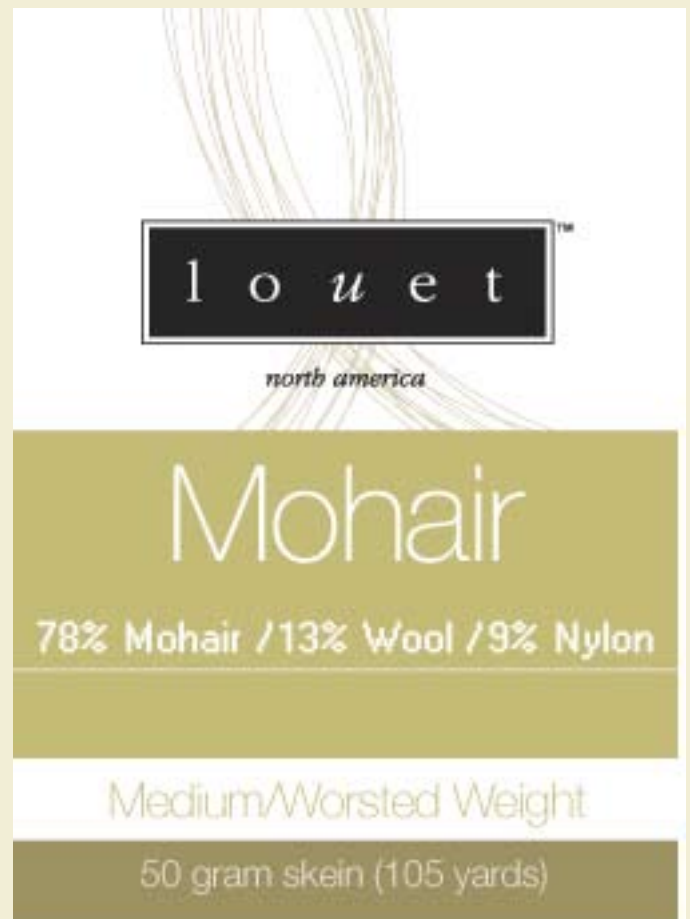
There are endless possibilities to play with in the weft. You could weave the whole towel with any of the colours used in the warp to achieve wonderfully striped towels. You can follow the warping sequence and weave the towel predominantly in Brown with the Bright Pink, Orange and Red stripes inserted where ever you want them to be. There are several versions shown in the photographs on the front page.

You have approx. 36" allotted per towel. This includes take-up and shrinkage. If you have used our shopping list for this pattern you will have to really play with your last towel to use up all the yarn.

Weaving: Your warp is long enough to make 4 towels with a finished length of 27" after washing. Weave your hems 1 1/2 - 2" or whatever you need. Remember you will need this length at the end of the towel as well. You should have about 30" left to play with your design.

Weave those 30 inches using the colour sequence you have chosen. When you have finished your first towel lay in a heavy strand of yarn as a dividing thread to separate this towel from the next. You are now ready to start your next towel.

Finishing: After you take the fabric off the loom, machine stitch along either side of the dividing thread and then cut the towels apart between the machine stitching. Hem the raw edges, folding 3/4" twice. Sew by hand or by machine. Machine wash in warm water, tumble dry on low, and then press.





Cotton

100% Organic

2/8 Cotton

100 g cone / 710 yards (647 m)

For technical assistance with this pattern, please contact:

Jane Stafford Textiles
jane@janestaffordtextiles.com

For more Louet North America Patterns, see your LYS or find all LNA patterns online at www.patternfish.com



Hand wash



Lay Flat to Dry

l o u e t

north america

United States
808 Comme rce Park Dr.
Ogdensburg, NY 13669

Canada
3425 Hands Rd.
Prescott, Ontario K0E 1T0

info@louet.com
www.louet.com

© 2009 Louet North America
Made in Canada